



Remap Newsletter No.91 – September 2021

Derby, Burton & District Panel
Serving Derbyshire & East Staffordshire

Editor: Bernard Killeen e-mail Bernard@longlands.net



Allan Sutton and Malcolm Logan have decided to step down from their positions as Chairman and Secretary after nine years in the posts. At this year's AGM, Peter Brien has been voted in as Chairman and Bernard Killeen as Secretary. Allan Sutton will become Vice Chairman. The remaining officers are Nich Holberton, Mike Banks, Robert Little and David Nappin and will retain their positions. The Derby and Burton panel members thank Allan and Malcolm for their input and support and look forward to working with them in the future as panel members.

We are now receiving referrals using a website portal. To send a referral, log on to the Remap website, <https://www.remap.org.uk/referral-form/>. Please select to submit a referral for yourself, or on behalf of someone else, and then fill in the form as best you can, giving the same level of information as before. Please pay particular attention to your contact details, specifically your email address and phone number and the client's postcode, which will be used to determine the Remap panel to which the referral will be sent if you haven't selected one.

DB-061-20 – John Gellatly



A young Burton boy with dwarfism needed moveable steps with a handrail to use the toilet independently. During an initial debate about whether an 'off the shelf' item would be suitable, it was concluded that a

set of steps with handrail specific to his needs was required. The steps required larger footplates and a higher handrail.

The steps were made with a wooden frame covered in ply. As the steps were used in a bathroom, the steps were completely sealed and gloss painted to ease cleaning.

The OT visited shortly after the steps had been delivered and confirmed "they're perfect for him"

DB-21-035 – Allan Sutton

A Derby boy needs high, easily removeable safety gates to fit at two locations at his carers house. Gates were required on a bedroom kitchen doors. As the client was not there all the time they needed to be easily removeable.

A single aluminium gate was provided, fitted with lift off hinges, as in previous referrals. With the lift off hinges, it could be fitted to the bedroom door when required and then transferred to the kitchen door when needed there. It could be removed and stored at other times. The gate was locked using a standard door security bolt and two keys were provided.



DB-21-030 - Paul Gillians

An elderly Heanor man needs a ramp to enable him to cross the threshold of his patio door. Maurice had a stroke rendering his left arm and hand useless. He walks with great difficulty on a flat floor but needs to steady himself by holding on to something when he tackles very small steps. In order to access his conservatory, he must cross the PVC threshold of the patio door.



Two handrails were made so he can hold one with his right hand as he faces outwards leaving his room and another as he returns in the opposite direction. They are fixed to a platform which in turn is screwed to the floor through the grout so as not to damage his expensive floor tiles.

DB-020-064 – Steve McCordick



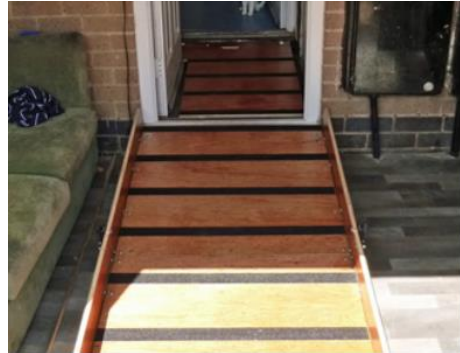
The children at Mickleover school for disabled need a turntable system to develop motor skills.

Two 700mm plywood discs were connected with a lazy susan bearing and rollers. A scaffold support was attached to the base disc. Toyota supplied a steering wheel that was fitted to the support.

DB-21-026 – Mike Banks

An elderly Chelaston lady with walking difficulties needs a ramped access from her back door, through a porch, into her back garden.

The client is moved in a manual wheelchair pushed by her husband. The finished ramp comprises three pieces made in plywood. There is an upper section and a lower section sloping down to the conservatory floor made in two pieces for ease of transport and storage. These latter two pieces are connected

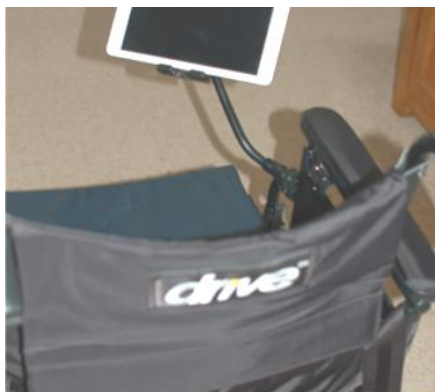


together by steel hooks locked in place by threaded turn-wheels. The slope is 1 in 12 and the ramps are finished in matt varnish with anti-slip strips placed laterally at intervals.

DB-21-044 – Malcolm Logan

An elderly West Hallam stroke victim, with left hand use only, needs an iPad holder attaching to his folding powered wheelchair.

The client had no movement on his left side. A Gooseneck support was fitted after minor modifications to the right hand arm of the chair. The client did not own the wheelchair and any fitment had to be removable.



DB-21-040 – Mike Banks



A young Ilkeston man needs the shaped overbed table provided under DB-030-20 modifying so it can be positioned closer to him.

Covid restriction meant that when the table was first supplied the cutout could not be checked for size and it has proved to be too deep. An insert has been made and fitted such that it is secure and comfortable for the client to use.

DB-21-042 – Robert Little



A Woodville lady, with only one hand, needs an adjustable device to hold the jewellery items she makes. Although the client has only one hand she enjoys making delicate and very intricate jewellery. She needed help to hold her work which can also vary considerably in size as the pieces progress.

A clipboard was modified by reversing the clip so the item could be held firm yet worked on with enough space around it. The clipboard is clamped to a music stand using bulldog clips. The stand can be raised or lowered to the desired height. The client was delighted with this solution.

DB-21-032 – Bernard Killeen / Dennis King

A lady who lives on a narrow boat wanted the step height reducing at the cabin entrance. The existing two steps down into the main cabin area had a steep drop. The OT advised that the steps were contributing to back pain.

The lower step was converted to a pair of steps. The pair were then screwed on to the original step through to the framework. This made the steps solidly attached, but removeable at any time should this be required.

The OT said, "I have assessed her mobility on the steps and they are perfect for the job".

